



SP² FIX

Cover crop association

Efficient at lower cost

- ◆ Moderate seed cost / ha
- ◆ Mobilizes large quantities of nitrogen
- ◆ Good break in cereal rotations
- ◆ Strong soil restructuring effect



SEM-PARTNERS
Semences - Conseils - Services

SP² FIX

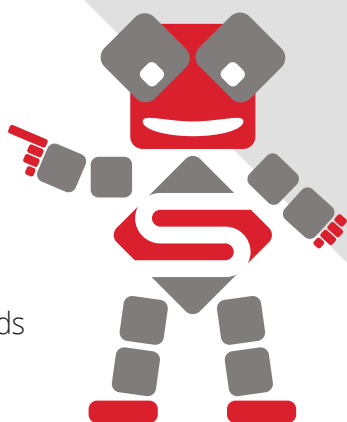
Cover crop association

USES

COVER CROP

CHARACTERISTICS

- ◆ Anti-nematodes action (beetroot rotation)
- ◆ Flexible sowing date : also effective for late sowings
- ◆ Easy to destroy
- ◆ Little affected by climatic hazards
- ◆ Not attractive to slugs



GROWING TIPS

Crops benefiting from the intercrop : Cereals, corn, potatoes, sorghum, sunflower...

Ease of implantation : +++

Sowing date : Well suited to early and late sowings

Sowing rate & depth : 10 kg/ha - +/- 2 cm


Targeted density : 100 to 110 plants/m²



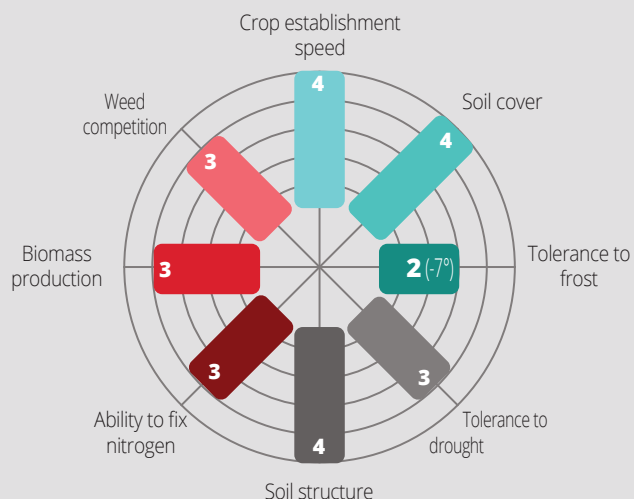
Seeding technique	Under the combine cutterbar	Direct seeding	Simplified Cultivation Techniques	After ploughing
Adaptation	-	+++	+++	++



Destruction method	Frost	Schredder, roller, chopper	Rolling on frost	Stubble cultivator	Plough	Glyphosate	Glyphosate + 2,4D
Efficiency	+/- (-7°C)	--	+	+/-	+	-	++

 Before planting vegetation cover, find out about the regulations in force in your region (Nitrate Directive), particularly with regard to the choice of species and the dates and methods of destruction.

Data sources :
CTPS / ARVALIS - * breeder/partner data - The agronomic and technological information provided in this document may vary from one year to the next depending on the region and agroclimatic conditions.



AGRONOMY

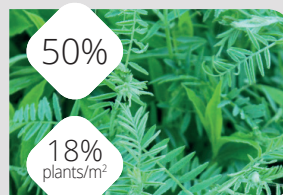
CEPP 0,02
Certificat d'Economie de Produits Phytosanitaires

SPECIES (FAMILIES)

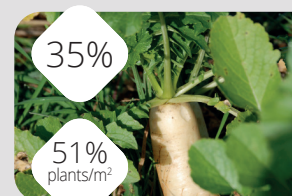
Common vetch (Legume)
+ Tillage radish (Brassicaceae)
+ White mustard anti-nematode (Brassicaceae)

CYCLE

Long (> 4 months)



Common vetch



Tillage radish



White mustard anti-nematode



SEM-PARTNERS
Semences - Conseils - Services
Centre de Bois Henry 78580 MAULE
www.sem-partners.com