



SP² FIX

Cover crop
association

An efficient, high-performance
cover crop at lower cost

- ◆ Moderate seed cost/ha
- ◆ Mobilizes large quantities of nitrogen
- ◆ Good break in cereal rotations
- ◆ Strong soil restructuring effect



SEM-PARTNERS
Semences - Conseils - Services

SP² FIX

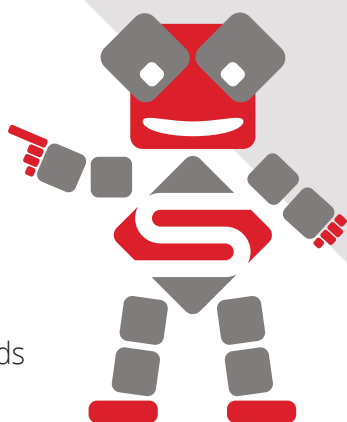
Cover crop association

USES

COVER CROP

CHARACTERISTICS

- ◆ Anti-nematode action (beet rotation)
- ◆ Flexible sowing date : also effective for late sowings
- ◆ Easy incorporation
- ◆ Little affected by climatic hazards
- ◆ Not attractive to slugs



GROWING TIPS

Crops benefiting from the intercrop : Cereals, corn, potatoes, sorghum, sunflower...

Ease of implantation : +++

Sowing date : Well-suited to early and late sowings

Sowing rate & depth : 10 kg/ha - +/- 2 cm

Targeted density : 100 to 110 plants/m²



Seeding techniques	Under the combine cutterbar	Direct seeding	Simplified Cultivation Techniques	After ploughing
Adaptation	-	+++	+++	++



Destruction method	Soil preparation tools	Ploughing	Frost	Rolling on frost	Crimping	Chemistry	Rolling	Toothed tools
Efficiency	+++	++++	++	+++	++	++++	++	-

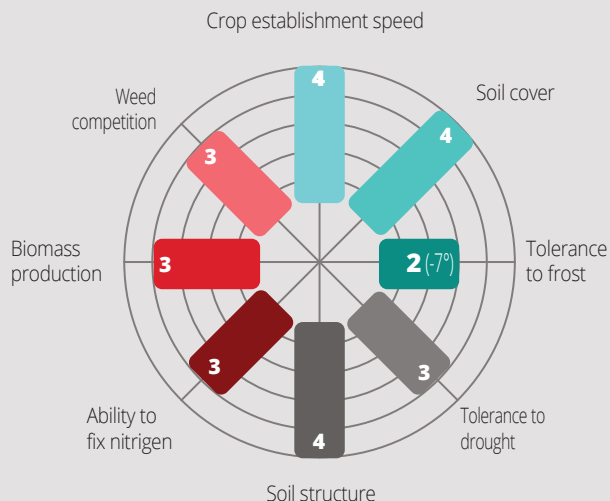


Before planting a plant cover, find out about the regulations in force in your region (Nitrate Directive), particularly with regard to the choice of species and sowing dates and methods.

Data sources : CTPS / ARVALIS - * breeder/partner data - The agronomic and technological information provided in this document may vary from one year to the next depending on the region and agroclimatic conditions.



SEM-PARTNERS
Semences - Conseils - Services
Centre de Bois Henry 78580 MAULE
www.sem-partners.com



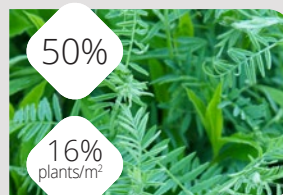
AGRONOMY

SPECIES (FAMILIES)

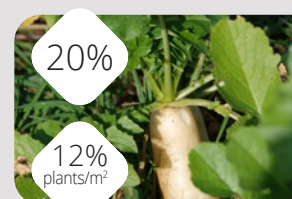
Common vetch (Legume)
+ Tillage radish (Brassicaceae)
+ White mustard anti-nematode (Brassicaceae)

CYCLE

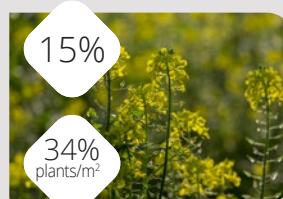
Long (> 4 months)



Common vetch



Tillage radish



White mustard

